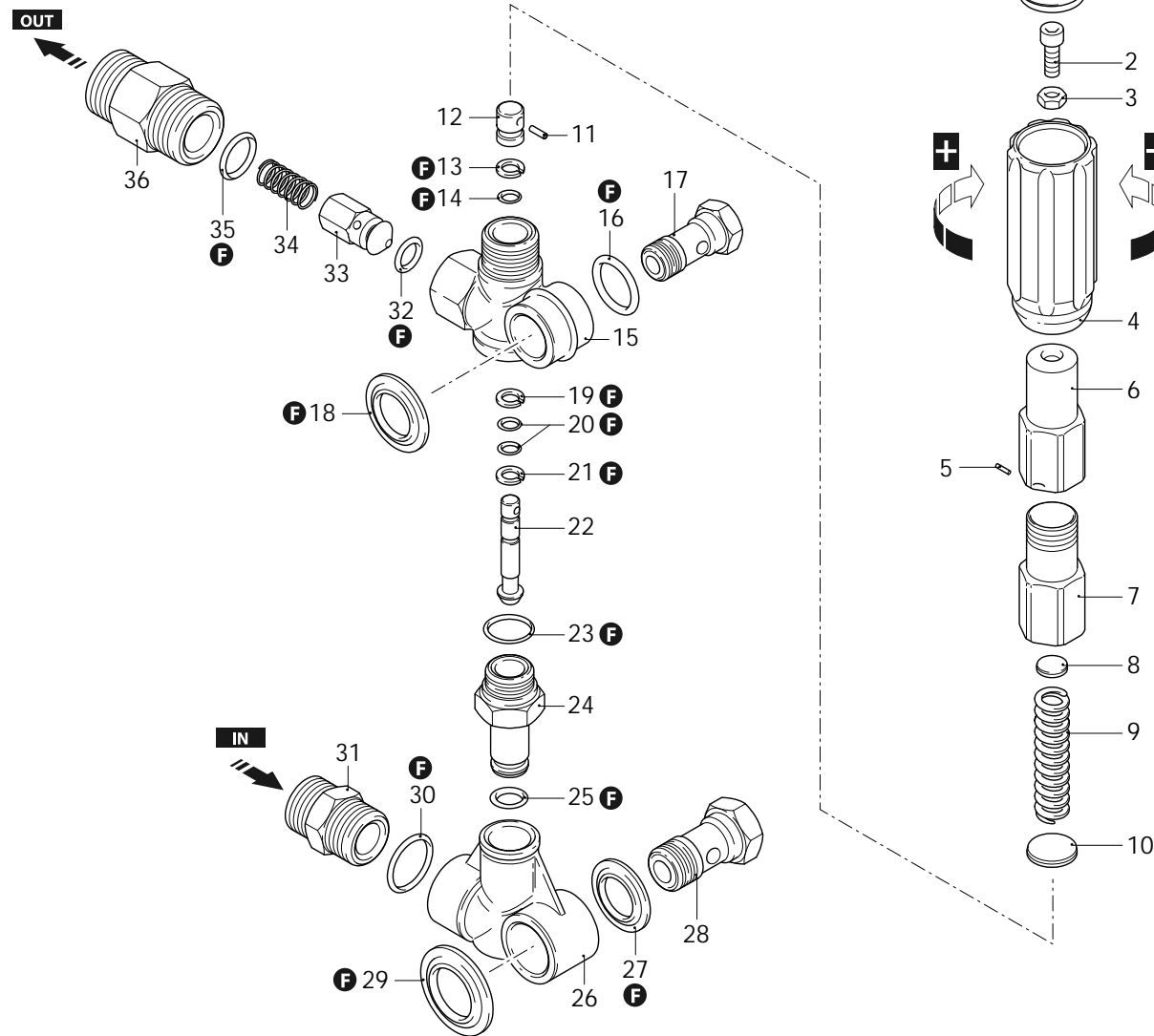




Regulation valves

GYMATIC 3/B

250 bar



AR-1_000064_v01

13/05/2023



Regulation valves

GYMATIC 3/B

250 bar

P	Code	Description	Q	Note	Validity	P	Code	Description	Q	Note	Validity
1	1560580	Plug	1								
2	540290	Screw	1	C=25Nm							
3	1660210	Nut	1								
4	1560400	Knob	1								
5	1080070	Pin	1								
6	1560420	Screw	1	Lubricate with grease Molykote PG54							
7	1560410	Guide	1	C=35Nm							
8	1560440	Wobble plate	1								
9	1560350	Spring	1								
10	1080610	Wobble plate	1								
11	1080660	Pin	1								
12	1080540	Piston	1	Lubricate with grease Molykote PG54							
13	1080640	Ring	1	anti-extrusion							
14	391000	O-ring	1	Lubricate with grease Molykote PG54							
15	1560010	Valve body	1								
16	390080	O-ring	1	Lubricate with grease Molykote G807							
17	1540272	Screw	1	C=30Nm							
18	1560280	Washer	1								
19	1080550	Ring	1	anti-extrusion							
20	480480	O-ring	2	Ø 4,48x1,78							
21	1080550	Ring	1	anti-extrusion							
22	1560320	Piston	1	lower							
23	880270	O-ring	1	Ø 17,17x1,78							
24	1560051	Fitting	1	C=35Nm							
25	390080	O-ring	1	Lubricate with grease Molykote G807							
26	1540020	Suction fitting	1	1/2" G (F)							
27	1540120	Washer	1								
28	1540090	Fitting	1	C=40Nm							
29	1560290	Washer	1								
30	480440	O-ring	1	Ø 17,13x2,62							
31	1540050	Fitting	1	C=40Nm							
32	1560151	O-ring	1	Ø 5,94x3,53							
33	1560890	Shutter	1								
34	1560140	Spring	1								
35	180101	O-ring	1	Lubricate with grease Molykote PG54							
36	1560110	Fitting	1	C=35Nm							
F	2611	Gasket kit	1								

Revision: 1

Oil type: -

Attachment:

Date: 13/05/2023

Oil quantity: -

*C= Tightening torque (Tolerance +0 ÷ -10%)*** = Not present for electric pump*